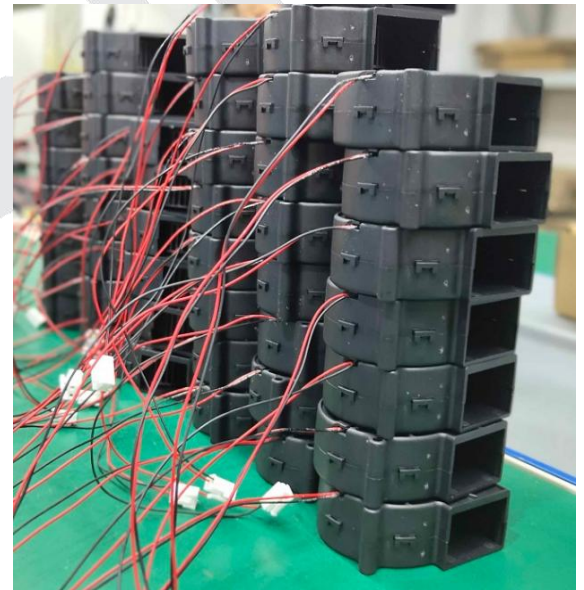


Professional Honest, Responsibility Since 2013

About Us

XINPU Corp (or the name is Xinpufan Corp) is originated from the year of 2013 and located in China, which is a trusted manufacturer specializing in R&D, customization, manufacture, and sales of various brushless cooling fans such as [Axial DC Fan](#), [Blower DC Fan](#), [Centrifugal DC Fan](#), [Axial AC Fan](#), [Blower AC Fan](#), [Centrifugal AC Fan](#), [EC Fan](#), [Frameless Fan](#), [Crossflow Fan](#), and [Fan accessory](#).

With the fast growth of sales over these years, we established a new branch office in Yiwu City, China, also both head office and factory located in Shenzhen city with an area of 2100+ square meters and 218 dedicated staff members now. Apart from that, we have a professional partnered mold factory that focuses on customizing various fan housings and impellers as customers require. There are advanced different equipment and instrument across our production base. For instance, 10 semi-automatic winding machines, 8 fully automatic winding machines, 10 semi-automatic magnetizing machines, 5 fully automatic magnetizing machines, 4 automatic assembling machines, 6 new modernized bilateral aluminum production lines and other supporting production and wind tunnel instruments, silent room, environmental protection testers, high and low-temperature aging testing equipment. All of these fan products made by XINPU complies with quality certificates such as CE, RoHS, FCC, UL, and so on, which can widely used in many fields such as Health Care, Led Lighting, Office Equipment, Power Supply, Telecom, Transportation, etc. Our loyal customers are located in different countries or areas in the world, especially for Europe and North America.



Brushless Fans

Air Expert Since 2013



History & Milestones

2013

- ◆ Founded in 2013, Mr. John (retired) foresaw a tremendous business opportunity on developing a brushless fan manufacturing chain. Therefore, he established a small-sized workshop with 10 staff members to start his career.

2018

- ◆ To motivate more employees to dedicate their talents and create a greater career in the future. We implemented 100% employee-owned policy.

2019

- ◆ Everything is getting better and better as we expected. We moved into a larger factory covering an area of 2100+M² with over 200 staff members in 2019, which can manufacture around 50000 pcs fan products per working day under normal working condition.

2021

- ◆ We established a new branch office in Yiwu City of China in 2021, which can also offer sales services and technical supports for global customers.



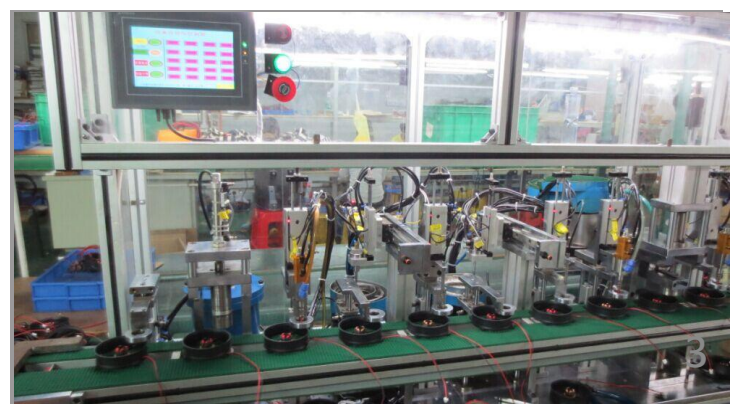
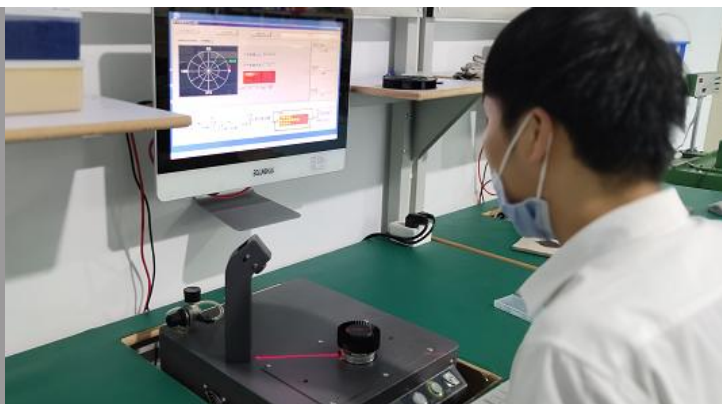
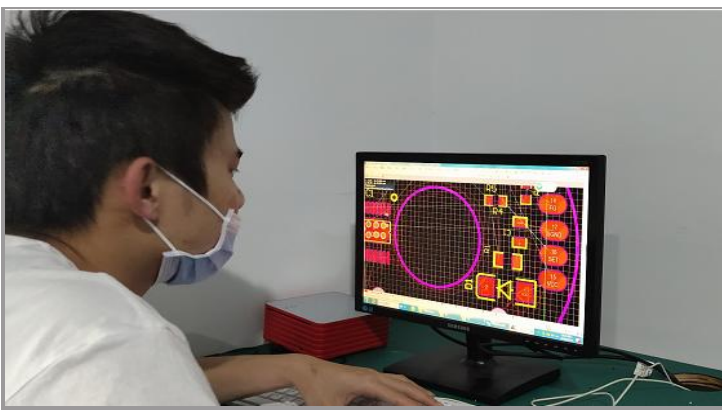
Future

- Plan to build a new factory in Vietnam.
- Plan to set up sales/service office in U.S.A.
- Plan to set up sales/service office in Germany.

Standing Out From The Rest

Main Core Competence

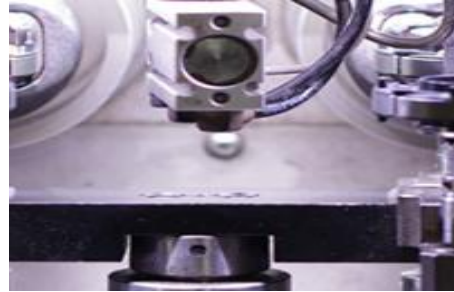
1. Xinpu Corporation utilizes in-house technical expertise and priceless experiences to develop the unique and complex fan products as customers require while having an innate understanding of all aspects of Fluid dynamics, Thermodynamics, Electronics, Electro-magnetics and Mechanics.
2. Xinpu Corporation can do a series of customized services for each new component of various brushless fans. This includes: Tooling design & production bringing to life our plastic injected parts, Performance blade dynamics study and creation, Drive motor design optimization & production all being fully integrated with proprietary electronics hardware and firmware.
3. Xinpu Corporation is certified by ISO9001 quality management system. All products can be approved by CE, ROHS, UL, FCC, and so on according to the need of customers. We also have the capability in-house to test the key quality performance on finished fan products.
4. Xinpu Corporation has a shorter delivery time than most competitors because of auto production lines with advanced equipment and machines in-house.



10 Key Steps We Make Brushless Fans



① Housing/impeller production



② Winding Motor



③ Soldering Components



④ Ironing Tin Bottom



⑤ Motor and Motherboard assembled



⑥ Welding Line



⑦ Testing motor



⑧ Total assembling

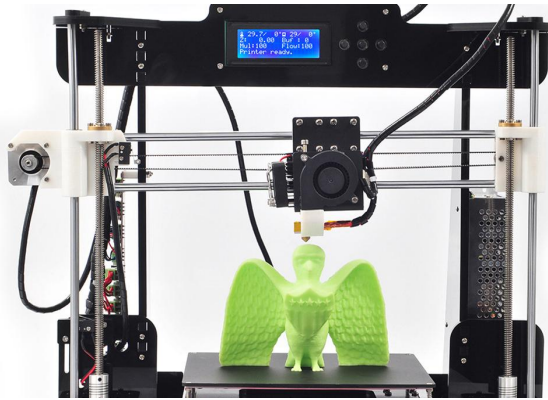


⑨ Finished product testing



⑩ Products Packing

Case Applications



■ 3D PRINTER



■ CAR AIR VENTILATED SEATS



■ SYSTEM DATA SEVER



■ CAR LED HEADLIGHTS

MINI
FAN
MASK



■ FACE MASKS



■ HUMIDIFIER



■ COMPUTERS



■ MEDICAL VENTILATOR